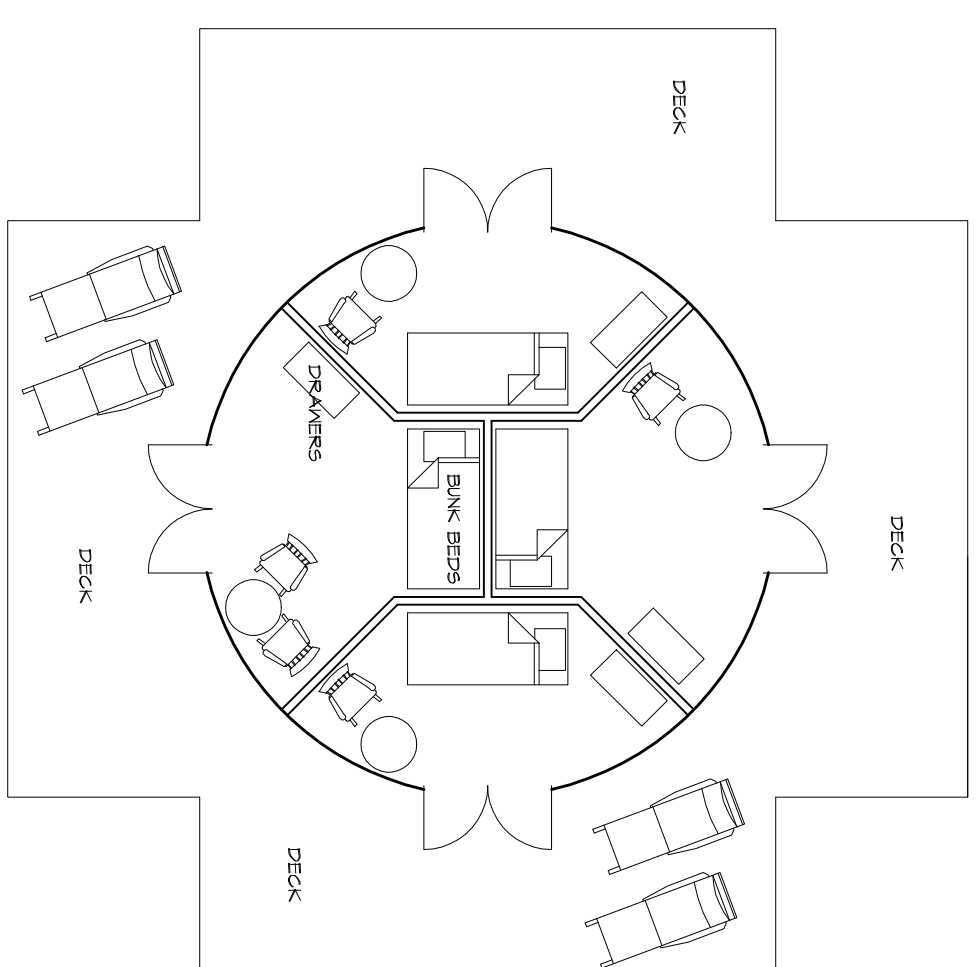


PROPOSED ECO HOSTEL / CAMPGROUND - ST JOHN, USVI.

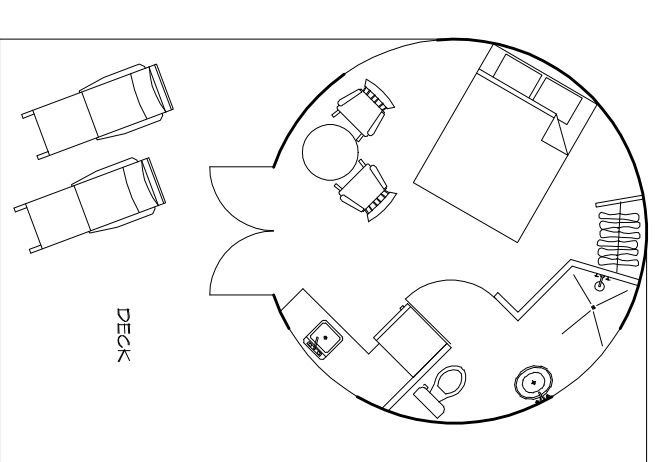
THESE DRAWINGS AND REVISIONS ARE INSTRUMENTS OF SERVICE. THE DRAWINGS AND CONTENTS THEREOF, INCLUDING ELECTRONIC MEDIA AND CAD FILES, ARE THE PROPERTY OF SA ARCHITECT, ARCHITECTURE, PLANNING & DESIGN CONSULTANTS. THEIR USE, REPRODUCTION OR REPRODUCTION IN ANY MANNER WITHOUT THE WRITTEN AGREEMENT OF SA ARCHITECT IS PROHIBITED. ANY REVISIONS TO THESE DRAWINGS MUST BE APPROVED BY SA ARCHITECT IN WRITING. THE ARCHITECT IS NOT RESPONSIBLE FOR ANY CONFLICTS OR INCONSISTENCIES BETWEEN THESE DRAWINGS AND ANY OTHER DOCUMENTS. THE ARCHITECT SHALL NOT BE RESPONSIBLE FOR ANY CONFLICTS OR INCONSISTENCIES BETWEEN THESE DRAWINGS AND ANY OTHER DOCUMENTS.

REVISIONS

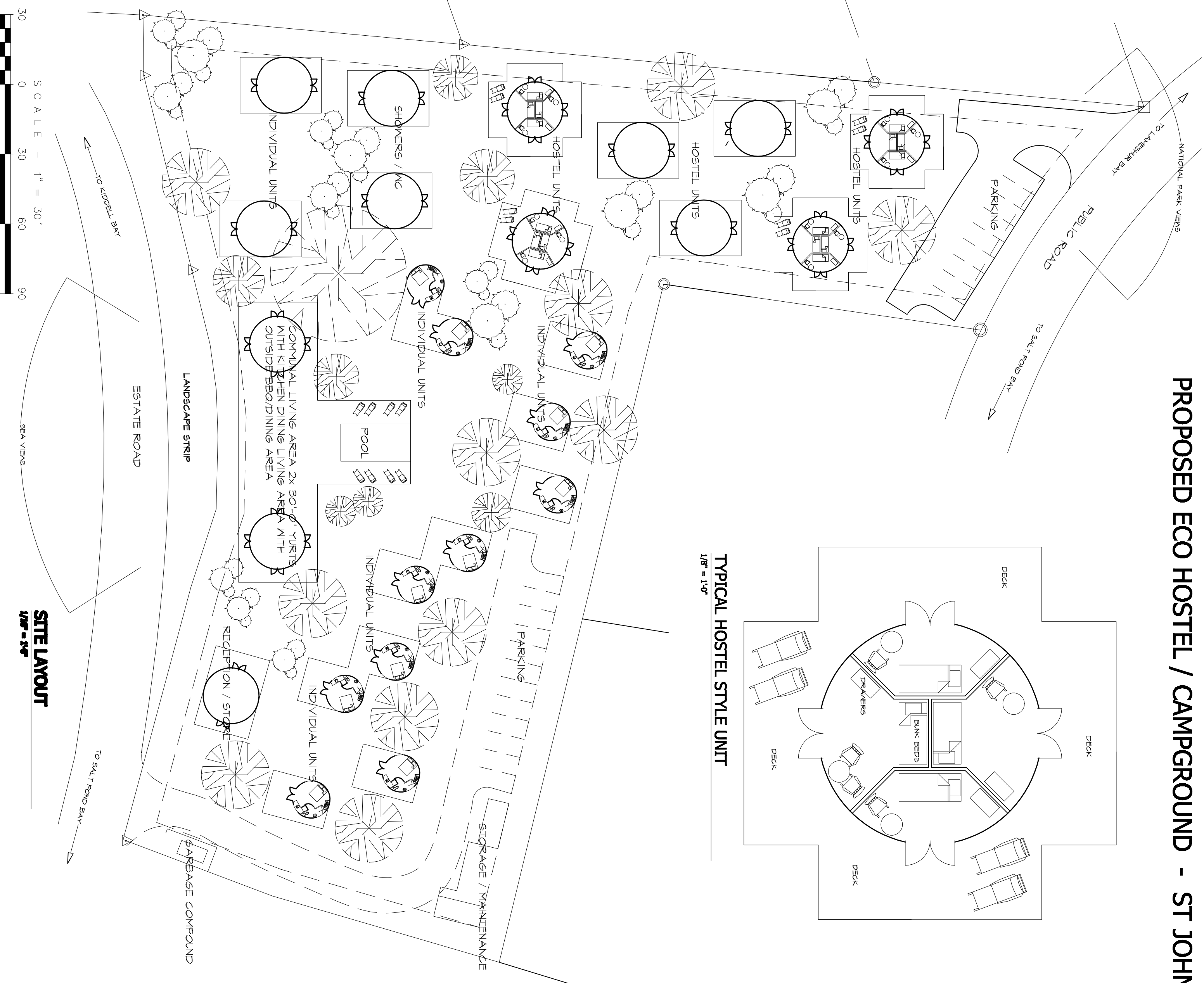
DATE	ITEM
A	



TYPICAL HOSTEL STYLE UNIT
1/8" = 1'-0"



TYPICAL INDIVIDUAL UNIT
1/8" = 1'-0"



SCALE - 1" = 30'



SITE LAYOUT
1/4" = 3'-0"

PROJECT DETAILS

HOSTEL STYLE YURT	7 x 8 PERSONS =	56
INDIVIDUAL YURTS	13 x 2 PERSONS =	26
TOTAL UNITS	20 TOTAL PERSONS =	82
COMMUNAL YURTS	2	
SHOWER/MC	2	
SWIMMING POOL	16' x 24'	
PARKING SPACES	21	

EAAL
EDMUND ARCHITECTURAL LTD
ARCHITECTURE
PLANNING
PROJECT MANAGEMENT

BY: +1 (284) 348 7000
US: +1 (340) 643 7272
BRIAN@EDMUNDEAL.COM

PROJECT
PROPOSED ECO CAMPGROUND
FOR
BRK DEVELOPMENTS LTD
ESTATE MANDIHL
ST JOHN
USVI.

DESCRIPTION
SITE LAYOUT /
YURT PLANS

JOB	1405	SCALE	1/32" = 1'-0"
SHEET	A / 001	DATE	FEB 2014